



Reducing Economic  
Dependence on  
Extraction

---

Post-Extractivism




# Outline

- From Extractivism to Post-Extractivism
- Main Characteristics of Extractivism
- Belitung Case
- Group discussion
- The Post-Extractivism Imperative
- Post-Extractivism: Basic Ideas
- Components of Transition to Post-Extractivism





A landscape photograph of a turquoise lake with a dam, overlaid with a semi-transparent circle containing text. The lake is a vibrant turquoise color, and the dam is a long, low structure made of earth and stone. The sky is blue with white clouds. The foreground shows a sandy, rocky shore.

# From Extractivism to Post-Extractivism

---

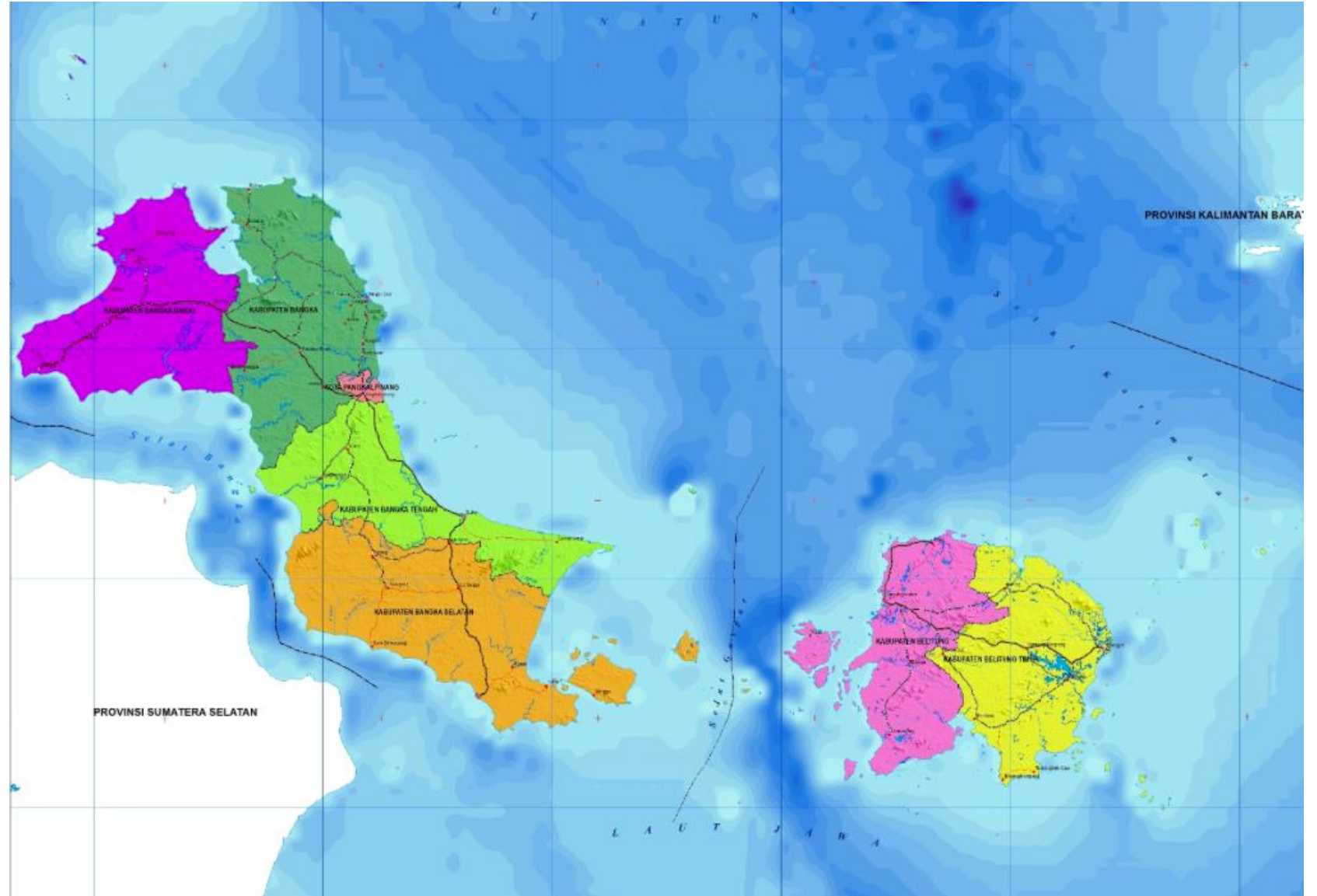
- Extractivism refers to those activities which remove large quantities of natural resources that are not processed (or processed only to a limited degree), especially for export.
- Extractivism is not limited to minerals or oil. Extractivism is also present in farming, forestry and even fishing
- (Acosta, 2013: p. 62).

# Main Characteristics of Extractivism

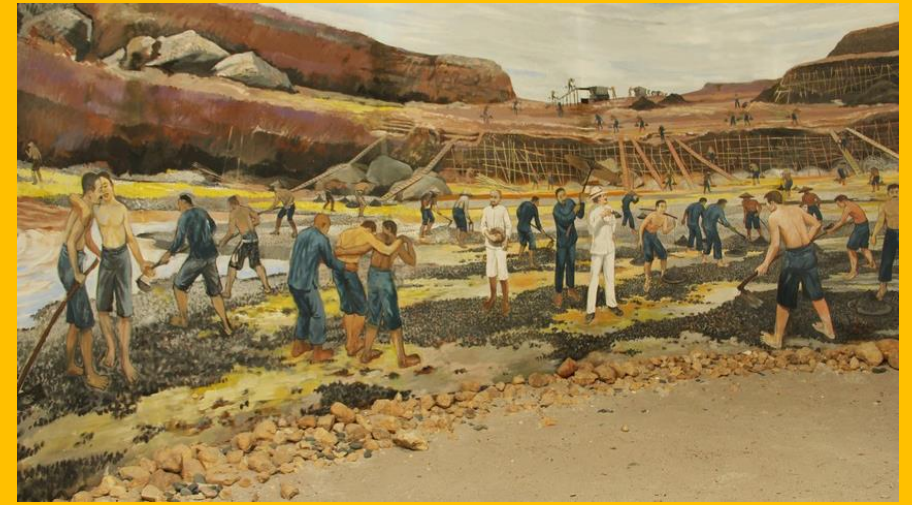
- Little direct impact for domestic economy
- High demand for capital: import-intensive industry



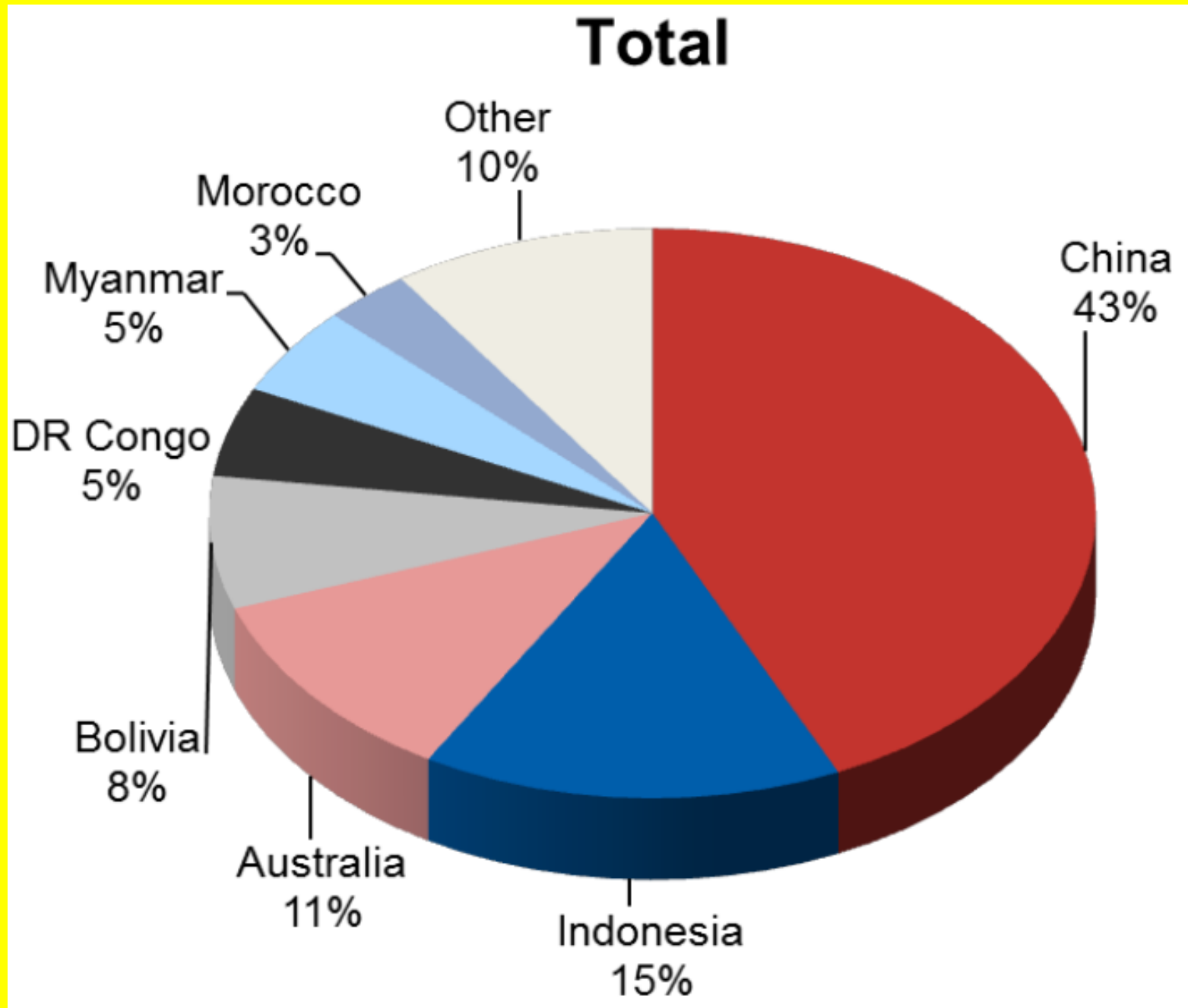
# Extractivism in Bangka Belitung



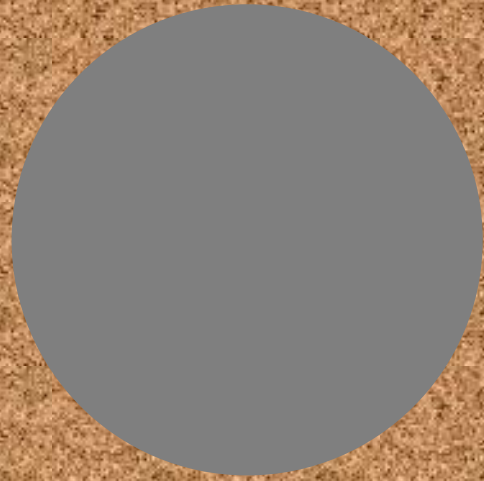
# Tin Culture



2015 Global Tin Reserves (ITRI, 2016)







Bangka and Belitung Produce 90  
Percent of Total Tin Production in  
Indonesia







**Unconventional Mining**



**PT Timah**



**Illegal Mining**

**Three Main Producers**

---





# High Demand of Tin

## What's hiding behind your screen?

Tin is used as solder in tablets and in countless other electronic products such as laptops, computers and mobile telephones.

**3-4 grams of tin per tablet**

**x 118 million tablets sold per year**  
**= 4.130.000 kg tin in tablets**

More than one-third of the world's tin comes from Indonesia.

**Tin mining on Bangka and Belitung has serious consequences:**

- Nature is threatened**  
half of the forests have been harmed by tin mining and logging
- Farming is vanishing**  
one-quarter of the land is now unfit for agriculture
- The fishing industry is collapsing**  
coral reefs are dying and fish are disappearing, sustainable food sources are being depleted

**Milieudefensie's solution:**  
**Tin buyers, producers and the government must work together to tackle the problem.**

<b>Tin companies</b> must restore lands used for tin mining.	<b>Tin companies</b> must stay away from coral reefs.	<b>The government</b> must oblige buyers to take responsibility for the tin they buy.	<b>Tablet manufacturers</b> must pay a fair price for responsibly mined tin.
--	---	---	--

**Was your tablet produced fairly?**  
[www.milieudefensie.nl/english/mining/what-s-hiding-behind-your-screen](http://www.milieudefensie.nl/english/mining/what-s-hiding-behind-your-screen)

**Friends of the Earth**

environment ▶ climate change wildlife energy pollution

Mining

## Samsung admits its phones may contain tin from area mined by children

World's best-selling phone manufacturer buckles to consumer pressure and reveals truth about its tin sourcing



A tin miner in Bangka, Indonesia, where 20% of locals are miners and another 40% work in related industries. Photograph: Ulet Ifansasti/Friends Of The Earth

environment ▶ climate change wildlife energy pollution

Environment

## Apple to establish if tin from Bangka Island is used in iPhones

Friends of the Earth steps up pressure on smartphone makers to 'come clean' over use of child labour in Indonesia



A child labourer at a Bangka tin mine ... Apple is under pressure to establish if its devices use tin from the area. Photograph: Ulet Ifansasti/Friends of the Earth

Advertisement

**A week in the life of the world**

theguardianweekly

Natalie Starkey  
 Fri 12 Jul '13 12:02 BST



< 50 14

This article is 4 years old







Tourism as a new livelihood strategy



Diangkat dari  
novel laris karya  
**ANDREA  
HIRATA**

12 00

UNTUK 12 TAHUN KELOMPOK  
UMUR ATAS MELAKUKAN  
KEMUNGKINAN TERBUKA  
UNTUK MENYEMBAH  
MAYAT ATAU MELAKUKAN  
MAYAT ATAU MELAKUKAN

REKOMENDAS PRODUSER

INA FOUNDATION  
n bangga mendukung

# laskar angi

Hanya di Bioskop mulai 25 September 2008!

CUT MINI IKRANAGARA SLAMET RAHARDJO TORA SUDIRO

LUKMAN SARDI ARIO BAYU MATHIAS MUCHUS RIEKE DYAH PITALOKA ROBBY TUMEWU  
ALEX KOMANG RIFNU WIKANA JAJANG C'NDER ZULFANI FERDIAN VERIS YAMARNO



# Post Extractivism



# The Post-Extractive Imperative

- The need to deal with the acute social and environmental impacts of the major extractive industries (Gudynas, 2013: p. 166).
- The urgent to deal with the high propensity for conflict that surrounds many extractive enterprises
- The social and environmental costs are externalised represents a heavy economic cost, aggravating the economy's focus on primary commodities and reducing the ability to diversify production, while the employment generated is minimal (Acosta, 2009 in Gudynas, 2013: p. 166)
- Non-renewable in nature (resources that will be exhausted in the not-too-distant future) (Gudynas, 2013: p. 166)

## What's hiding behind your screen?

Tin is used as solder in tablets and in countless other electronic products such as laptops, computers and mobile telephones.

**3-4 grams of tin per tablet**

**x 118 million tablets sold per year**  
**= 4.130.000 kg tin in tablets**

More than one-third of the world's tin comes from Indonesia.

**Tin mining on Bangka and Belitung has serious consequences:**

- Nature is threatened**  
half of the forests have been harmed by tin mining and logging
- Farming is vanishing**  
one-quarter of the land is now unfit for agriculture
- The fishing industry is collapsing**  
coral reefs are dying and fish are disappearing, sustainable food sources are being depleted

**Milieudefensie's solution:**  
Tin buyers, producers and the government must work together to tackle the problem.

<b>Tin companies</b> must restore lands used for tin mining.	<b>Tin companies</b> must stay away from coral reefs.	<b>The government</b> must oblige buyers to take responsibility for the tin they buy.	<b>Tablet manufacturers</b> must pay a fair price for responsibly mined tin.
--	---	---	--

**Was your tablet produced fairly?**  
[www.milieudefensie.nl/english/mining/what-s-hiding-behind-your-screen](http://www.milieudefensie.nl/english/mining/what-s-hiding-behind-your-screen)

**Friends of the Earth**



# Post Extractivism

- Reducing dependency towards extractive industry
- Does not suggest a ban on all extractive industries
- From 'predatory extractivism' to 'sensible extractivism' to 'indispensable extractions
- Measuring non-fiscal cost and benefits of extraction



# Components of Transitions to Post-Extractivism

